

BRIAN JAMES TRAILERS

» Connected to you



RACE TRANSPORTER

Race professional

UNITED KINGDOM

CONTENTS

04 RACE TRANSPORTER 4

Up to mid sized road cars and larger race cars.

06 RACE TRANSPORTER 5

High standard – one working platform.

10 RACE TRANSPORTER 6

Large, intelligent, professional.

16 RACE TRANSPORTER 4, 5 & 6

Options overview.

18 RACE TRANSPORTER 4, 5 & 6

Standard equipment.

20 RACE TRANSPORTER 4, 5 & 6

Optional equipment.

22 BRIAN JAMES TRAILERS

Contact details.



RACE TRANSPORTER

The leader in covered trailer technology



RACE TRANSPORTER

RACE TRANSPORTER 4



RACE TRANSPORTER 4

Designed for performance
Effortless loading



Race Transporter 4 is ideal for providing a large, usable fully enclosed transportation space for vehicles up to mid sized road cars and larger race cars.

All models in the range feature a full width, full height rear door ramp with gas spring assistance, offering easy access. The tilt-bed models accommodate competition cars with a low ground clearance and will eliminate loading issues.

As with all Race Transporter models the **Race Transporter 4** is manufactured to comply fully with EEC law, being approved to EEC dir. 2007/46 and comes with a standard 5 year chassis warranty.

Race Transporter 4 standard specification provides the same high quality chassis and body as other Race Transporters, and allows an enhanced specification to be constructed to suit individual circumstances.



RACE TRANSPORTER 4

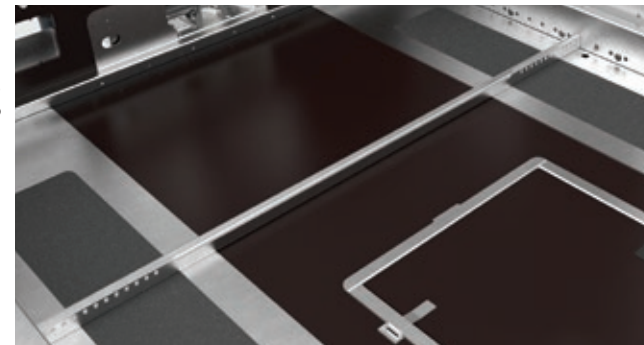
RACE TRANSPORTER 4

Standard and Optional features.

- Large 'Gullwing' side access doors provide a wide practical access to vehicles, from both sides of the trailer. (1.90m wide).
*Excludes 374-0001



- Wheel chock, 50mm high to suit cars with low splitters. Bolted in a position to suit requirements.

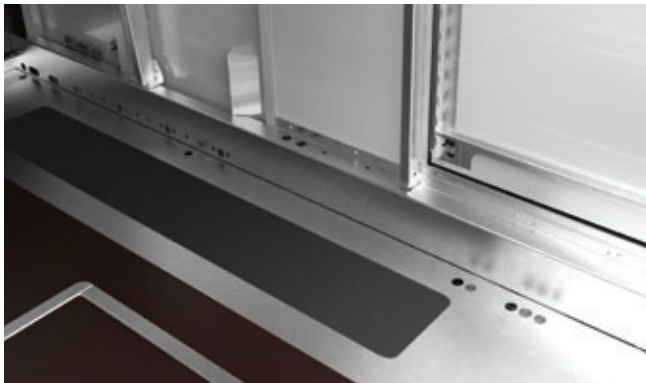


- Alloy wheels TUV approved, light weight 12" 155/70 alloy wheels with safety locking wheel bolts.



- Front strapping access hatches on both left and right sides.

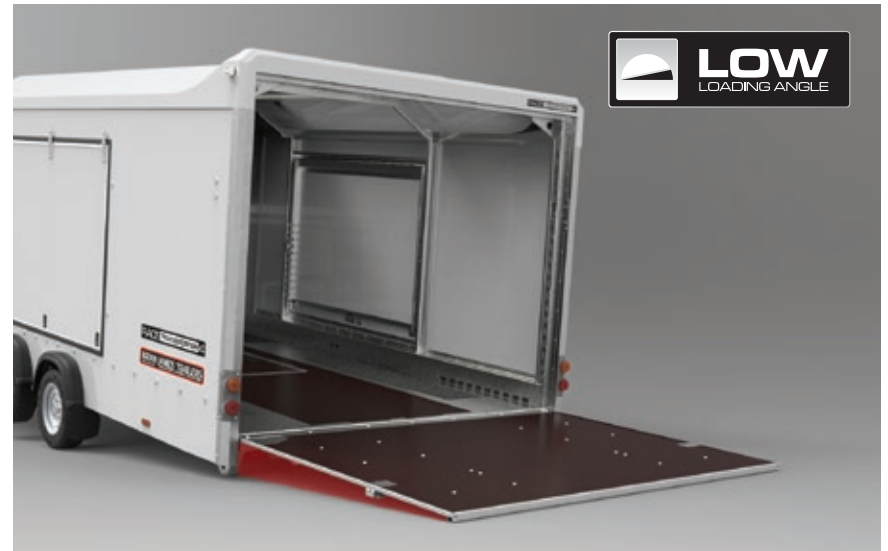




- Steel and commercial **vehicle deck** combination with anti slip floor panels.

- **Electric winch, 12v with remote control.**

Electric winch, mounted as shown is powered by a fully fitted 12v battery pack. Full remote control is via a wander lead. Winch features free line spool and roller guides. Mains charger supplied.



- **Hydraulic tilt-bed**

Powerful self-contained hydraulic hand pump and ram powers the tilt-bed operation to create a low loading angle.



- **Front storage,** with space for up to four 20ltr jerry cans and six storage shelves.

- **Tyre rack**

Transport of multiple spare wheels and tyres is easily accomplished with a high level tyre rack. Its design places the wheels above average bonnet height, so keeping useful space available on the trailer bed. Safety and security of the transported wheels is provided by a unique strap system.



- **High quality lighting system** - automotive specification bulbed lamps in stylish housings. Front and side marker lamps are LED technology as standard.

- **Upgrade to full LED lighting**

Replace bulbed rear lamps with LED technology.

LED lamps: Note

LED lamps are not compatible with all towing vehicles. This may cause unintended consequences. Please check compatibility. A mix of filament and LED lamps is possible.

RACE TRANSPORTER 5



RACE TRANSPORTER 5

Enduring power

Finely honed designs



Race Transporter 5 features a high standard specification to provide a working platform for any owner whether commercial or private.

Race Transporter 5 can be ordered in a choice of lengths, widths and capacities. The low bed chassis provides stable and safe towing.

All **Race Transporter 5** models feature a hydraulic-tiltbed operation, together with a full width ramp door. The aluminium and steel constructed door features a single closing and locking mechanism and full body work to finish the enhanced look. The resulting loading facility is suitable for most sports or race cars.

Standard equipment also includes asymmetric doors on both left hand and right hand sides, a pair of forward hatch doors, a remote control electric winch and various loading and securing equipment.



RACE TRANSPORTER 5

RACE TRANSPORTER 5

Standard features.

- **Twin opening side doors**, one personnel door and one main door on both sides, together provide a wide practical access to vehicles.



- **Front access hatches** on both left and right sides give access to inside storage and for fast vehicle strapping.



- **Twin axle and light weight low chassis** ensures excellent stability.

- **Full LED lighting**

LED lights are both super bright and reliable. All lamps are LED technology as standard.

- **LED lamps: Note**

LED lamps are not compatible with all towing vehicles. This may cause unintended consequences. Please check compatibility.

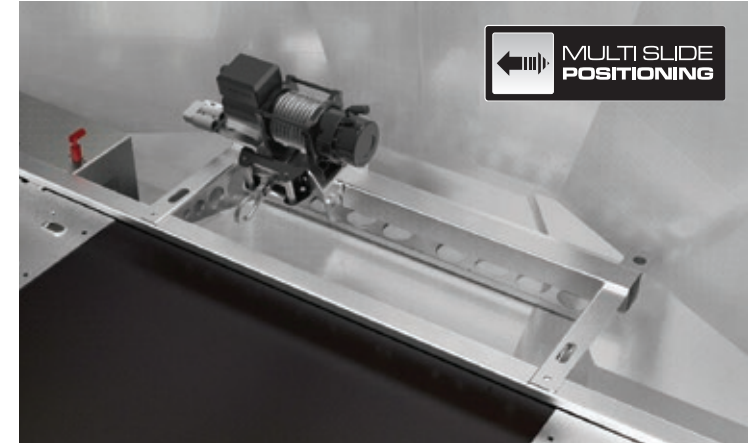




- Full width, full height **rear door ramp** with high quality moulded rear bodywork and a central "easy close" integrated locking handle.



- **Daylight roof**, take advantage of natural daylight with a translucent roof to create an enhanced working environment.



← **MULTI SLIDE POSITIONING**

- **Electric winch**, 12v with remote control lead. 4,500 lbs capacity, roller fairlead, wire cable and snap hook. On-board battery power. Multi slide mounting allows side-to-side positioning to suit all towing eye locations.

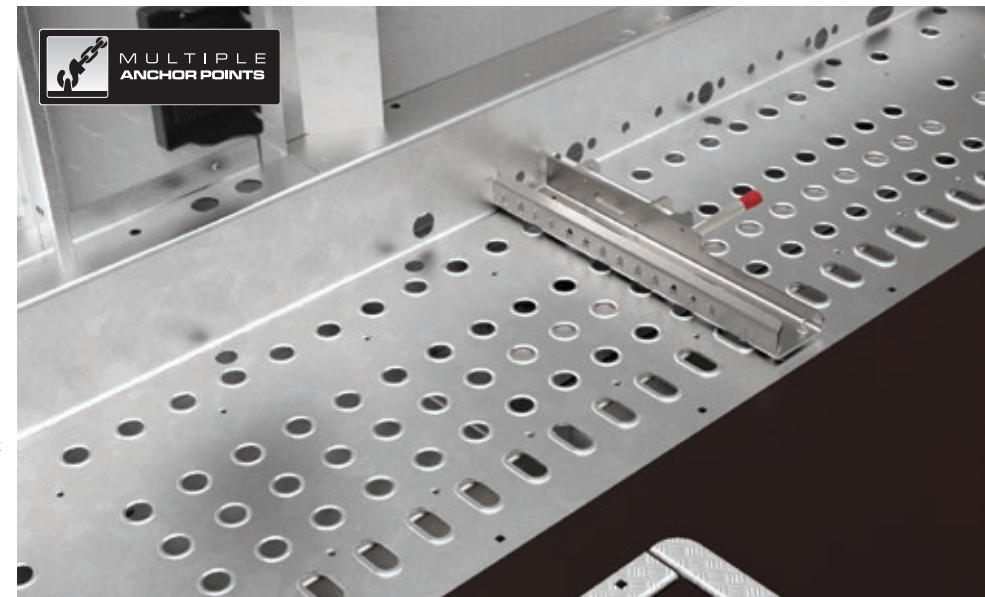


 **LOW**
LOADING ANGLE



- **Hydraulic tilt-bed**
Powerful self-contained hydraulic hand pump and ram powers the tilt-bed operation to create a low loading angle.

- **Multiple anchor points**
Chassis located strap attachment points are provided along each side of Race Transporter 5. High levels of grip and strength are offered by the raised, punched profile of each slot within the aluminium decking.



 **MULTIPLE ANCHOR POINTS**

- Load securing **wheel chocks**, fully adjustable and quick release. Suitable for cars with low splitters.

RACE TRANSPORTER 6



RACE TRANSPORTER 6

Driving force

Enclosed transport



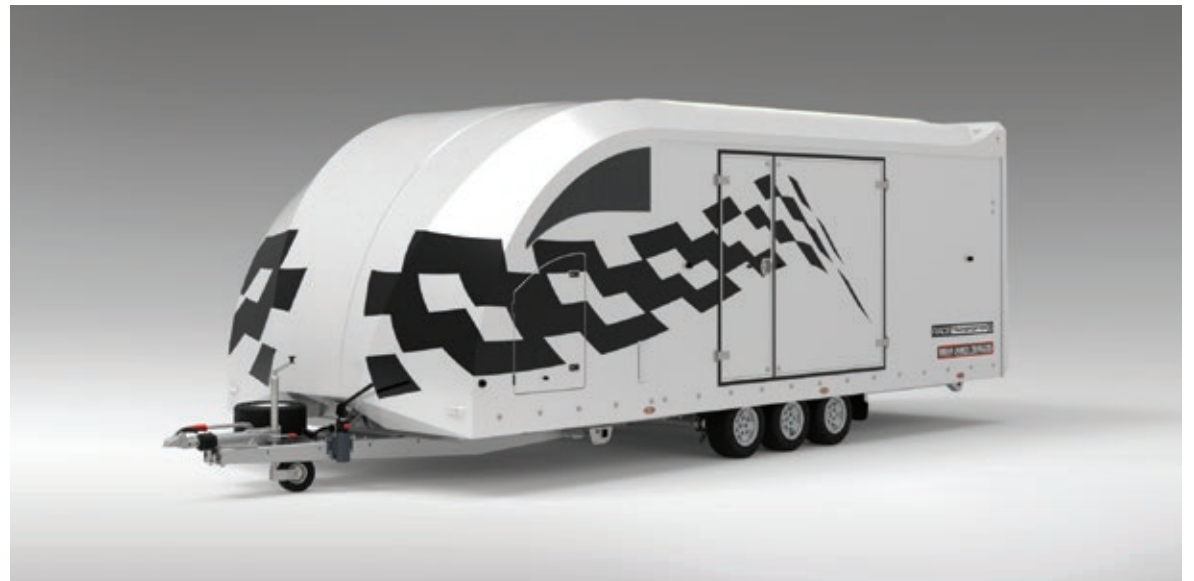
Offering two width and three length options, the widest being the same as an HGV transporter, the **Race Transporter 6** is quite capable of transporting wide race and sports cars. Additional space is invaluable for creating a useful working environment for daily transport operations and creates a capable work facility for small teams at race meetings.

Along with a high standard specification, the range and scope of options for storage as well as operational features will appeal to anyone who has specific requirements.

Race Transporter 6 chassis design has wheels under the bed with a fully flat floor up to the sides. To manage bed height and maintain a low centre of gravity

Race Transporter 6 has Tri-axle running gear with 10" wheels and low profile tyres, 6.5m bed length models feature a 13" low profile tyre for extra durability.

Race Transporter 6 features a full LED trailer lighting system, this includes three LED interior strip lights providing excellent ambient light effect.



Race Transporter 6 shown with optional 'Chequered Flag' vinyl graphic package fitted.

RACE TRANSPORTER 6

RACE TRANSPORTER 6

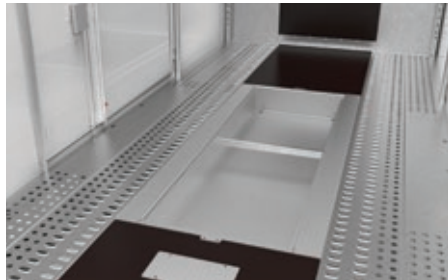
Standard features.

- **Full LED lighting**

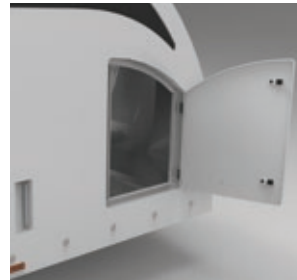
LED lights are both super bright and reliable. All lamps are LED technology as standard.

- **LED lamps: Note**

LED lamps are not compatible with all towing vehicles. This may cause unintended consequences. Please check compatibility.



- **Central storage,** aluminium trays built into the deck provide an ideal location for heavy, bulky items. Optional lids in Aluminium or deck board are available.



- **Front access hatches** on both left and right sides give access to inside storage and for fast vehicle strapping.



- **Multiple anchor points** Chassis located strap attachment points are provided along each side of Race Transporter 6. High levels of grip and strength is offered by the raised, punched profile of each slot within the high strength steel decking.



- **Twin opening side doors,** one personnel door and one main door on both sides, together provide a wide practical access to vehicles.



- **Full width, full height, body moulded rear door ramp** with gas spring assistance, provides easy access.

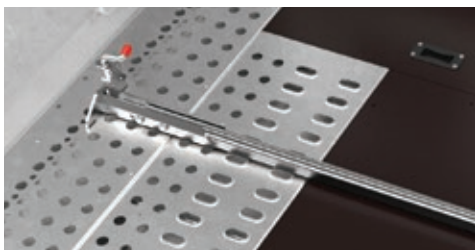




● **Daylight roof**, take advantage of natural daylight with a translucent roof to create an enhanced working environment.



● **Tie-down wheel 'sleeve' straps**
Approved by car manufacturers and race teams alike, these straps hold the vehicle safely and securely without straining the suspension geometry. Easy to fit, with multiple built-in-tie-down points.



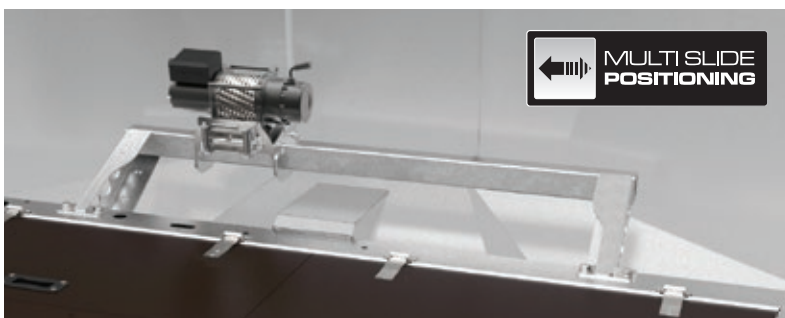
● Load securing **wheel chocks**, full width, fully adjustable and quick release. Suitable for cars with low splitters.



● **Hydraulic tilt-bed**
Powerful self-contained hydraulic hand pump and ram powers the tilt-bed operation to create a low loading angle.



● **Tri Axle** with wheels under bed give a fully flat inside load area right up to the sides whilst maintaining a very low centre of gravity.
**Alloy wheels optional.*



● **Electric winch**, 12v with remote control lead. 4,500 lbs capacity, roller fairlead, wire cable and snap hook. On-board battery power. Multi slide mounting allows side-to-side positioning to suit all towing eye locations.

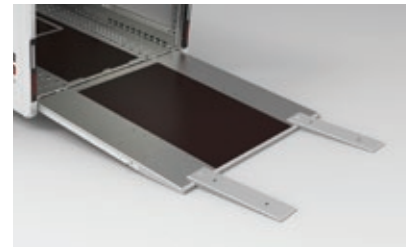
● Standard. ○ Optional at extra cost.



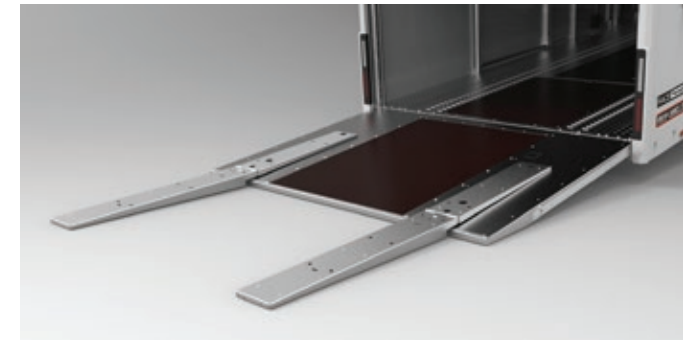
RACE TRANSPORTER

OPTIONS

For Race Transporter 4, 5 and 6



○ **Assister ramps** lower the loading angle. Stored inside the trailer for travel.



○ **Double assister ramps** make for an ultra low loading angle. Stored inside the trailer for travel.

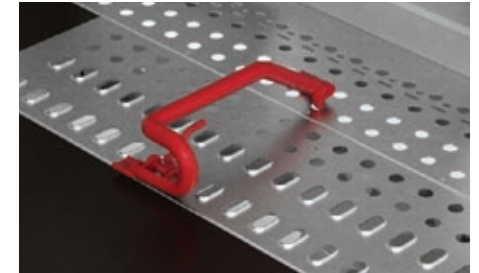


○ **Interior lighting pack**, a bank of 10 bright LED lights in an integrated bodywork panel. Powered by onboard battery.

○ **Alloy wheels** available on all Race Transporter models, reducing weight and enhancing aesthetics.



○ **Wheel chocks**, Fully adjustable, commercial type, quick release wheel chock system engages directly into the trailer chassis.



○ **Body Colour**

New for 2017, the Race Transporter range is available in either the standard white or the optional black bodywork.



○ **Vinyl Graphics**

Available in different designs.



○ Paper towel dispenser



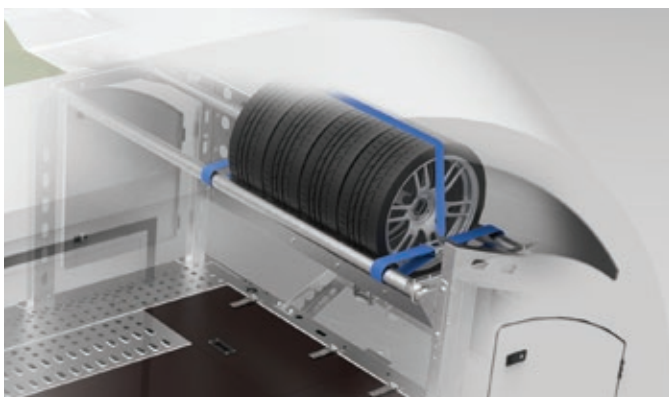
○ Hand wash station, 2.5 litre, self contained with the ability to hold and maintain warm water. Sink catches waste water ready for disposal.



○ Side windows in dark tinted acrylic adds style and practicality.



○ Additional reverse lights, these super bright side mounted LED reverse lights provide valuable extra visibility for close movement at night.

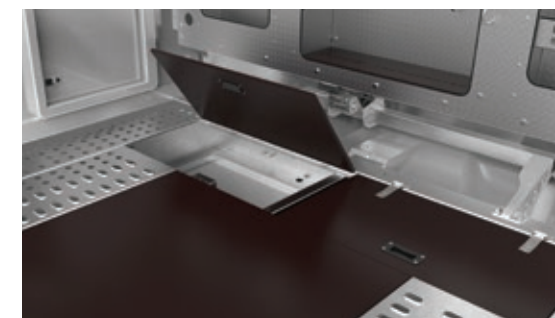


○ Tyre rack
Transport of multiple spare wheels and tyres is easily accomplished with a high level tyre rack. Its design places the wheels above average bonnet height, so keeping useful space available on the trailer bed. Safety and security of the transported wheels is provided by a unique strap system.

○ Folding aluminium work bench can be added to the tyre rack.



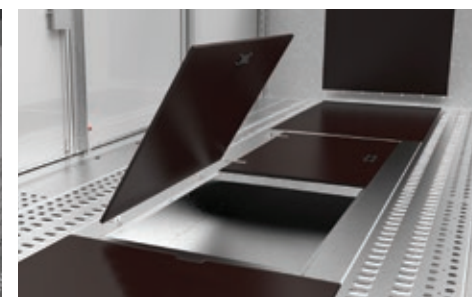
○ Store station with storage shelves and facility to carry 20 litre Jerry cans.



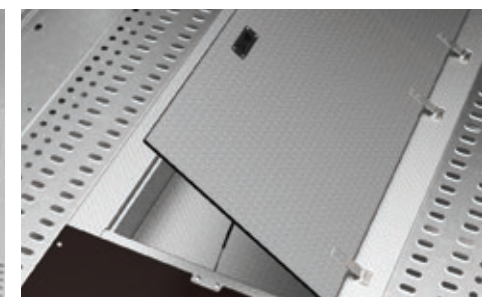
○ Front storage lockers, on left and right hand side with hinged deck board lids.



○ Aluminium side storage racks, on left and right hand side, each having 3 shelves for storage of smaller items. 600mm wide x 76mm deep.



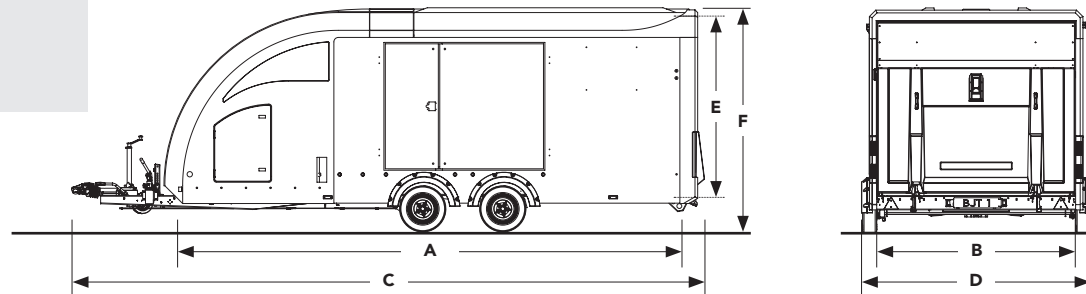
○ Centre storage lids
To compliment the standard centre storage trays. Available in deck board material or aluminium.



RACE TRANSPORTER

RACE TRANSPORTER 4 & 5

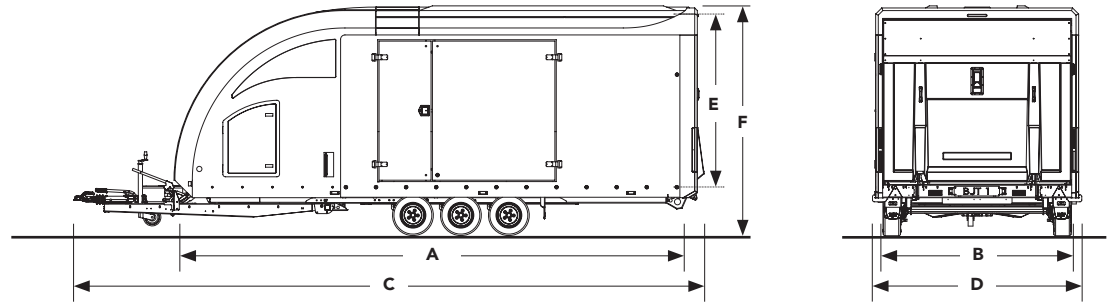
STANDARD EQUIPMENT.



STANDARD												
MODEL	RACE TRANSPORTER 4				RACE TRANSPORTER 5							
LOAD BED LENGTH M A	5.00		5.50		5.00				5.50			
CAPACITY												
Gross kg	2,600	2,600	3,000	3,500	2,600	2,600	3,000	3,000	3,500	3,000	3,000	3,500
Load kg	1,580	1,570	1,900	2,260	1,510	1,490	1,900	1,870	2,300	1,860	1,830	2,260
Unladen trailer weight kg	1,020	1,030	1,100	1,240	1,090	1,110	1,100	1,130	1,200	1,140	1,170	1,240
DIMENSIONS												
Load bed width m B	1.98	1.98	2.12	2.12	1.98	2.12	1.98	2.12	2.12	1.98	2.12	2.12
Overall trailer length m C	6.53	6.53	6.53	7.03	6.53	6.53	6.53	6.53	6.53	7.03	7.03	7.03
Overall trailer width m D	2.36	2.36	2.49	2.49	2.36	2.49	2.36	2.49	2.49	2.36	2.49	2.49
Internal height (min aperture) m	1.89	1.89	1.89	1.89	1.89	1.89	1.89	1.89	1.89	1.89	1.89	1.89
Internal height (to roof) m E	1.99	1.99	1.99	1.99	1.99	1.99	1.99	1.99	1.99	1.99	1.99	1.99
Overall trailer height m F	2.50	2.50	2.50	2.50	2.50	2.50	2.50	2.50	2.50	2.50	2.50	2.50
Towball height (loaded, centre of towball) m	0.40	0.40	0.40	0.40	0.40	0.40	0.40	0.40	0.40	0.40	0.40	0.40
OPERATION												
Loading operation	Ramp	Tiltbed	Tiltbed	Tiltbed	Tiltbed	Tiltbed	Tiltbed	Tiltbed	Tiltbed	Tiltbed	Tiltbed	Tiltbed
RUNNING GEAR												
Wheel size	12" (155/70)	12" (155/70)	12" (155/70)	12" (155/70)	12" (155/70)	12" (155/70)	12" (155/70)	12" (155/70)	12" (155/70)	12" (155/70)	12" (155/70)	12" (155/70)
Axles	2	2	2	2	2	2	2	2	2	2	2	2
Spare wheel	•	•	•	•	•	•	•	•	•	•	•	•
Heavy duty jockey wheel	•	•	•	•	•	•	•	•	•	•	•	•
DOORS												
Side doors	No Doors	Gullwing doors (two sides)	Gullwing doors (two sides)	Gullwing doors (two sides)	Twin doors (two sides)	Twin doors (two sides)	Twin doors (two sides)	Twin doors (two sides)	Twin doors (two sides)	Twin doors (two sides)	Twin doors (two sides)	Twin doors (two sides)
WARRANTY												
5 Year chassis warranty	•	•	•	•	•	•	•	•	•	•	•	•
PRODUCTS												
Product code	374-0001	374-0025	374-0040	374-0060	375-1010	375-1030	375-1050	375-1070	375-1090	375-1060	375-1080	375-1100

RACE TRANSPORTER 6

STANDARD EQUIPMENT.



STANDARD								
MODEL	RACE TRANSPORTER 6							
LOAD BED LENGTH M A	5.50		6.00			6.50		
CAPACITY								
Gross kg	3,500	3,500	3,500	3,500	3,500	3,500	3,500	3,500
Load kg	2,210	2,190	2,090	2,120	2,100	2,000	2,040	2,020
Unladen trailer weight kg	1,290	1,310	1,410	1,380	1,400	1,500	1,460	1,480
DIMENSIONS								
Load bed width m B	2.13	2.35	2.35	2.13	2.35	2.35	2.13	2.35
Overall trailer length m C	7.14	7.14	7.14	7.64	7.64	7.64	8.15	8.15
Overall trailer width m D	2.33	2.50	2.50	2.33	2.50	2.50	2.33	2.50
Internal height (min aperture) m	1.89	1.89	1.89	1.89	1.89	1.89	1.89	1.89
Internal height (to roof) m E	1.99	1.99	1.99	1.99	1.99	1.99	1.99	1.99
Overall trailer height m F	2.64	2.64	2.64	2.64	2.64	2.64	2.67	2.67
Towball height (loaded, centre of towball) m	0.40	0.40	0.40	0.40	0.40	0.40	0.45	0.45
OPERATION								
Loading operation	Tiltbed	Tiltbed	Tiltbed	Tiltbed	Tiltbed	Tiltbed	Tiltbed	Tiltbed
RUNNING GEAR								
Wheel size	10" (195/55)	10" (195/55)	10" (195/55)	10" (195/55)	10" (195/55)	10" (195/55)	13" (195/55)	13" (195/55)
Axles	3	3	3	3	3	3	3	3
Spare wheel	●	●	●	●	●	●	●	●
Heavy duty jockey wheel	●	●	●	●	●	●	●	●
DOORS								
Side doors	Twin doors (two sides)	Twin doors (two sides)	Twin doors (two sides)	Twin doors (two sides)	Twin doors (two sides)	Twin doors (two sides)	Twin doors (two sides)	Twin doors (two sides)
WARRANTY								
5 Year chassis warranty	●	●	●	●	●	●	●	●
PRODUCTS								
Product code	376-2010	376-2030	Hi-Line* 376-2035	376-2020	376-2040	Hi-Line* 376-2050	376-2025	376-2060

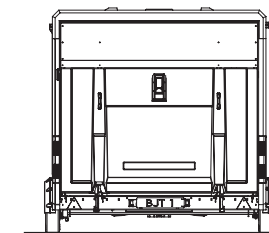
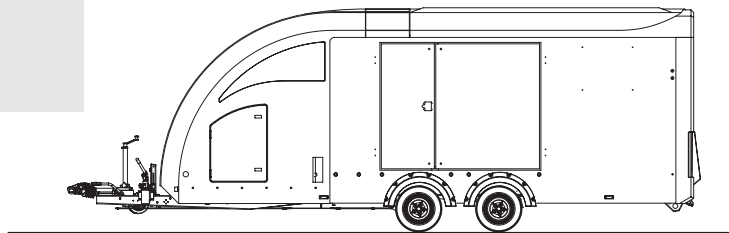
* Hi-Line – high specification models 376-2035 and 376-2050 feature a comprehensive package of standard features.

● Standard. ○ Optional at extra cost.

RACE TRANSPORTER

RACE TRANSPORTER 4, 5 & 6

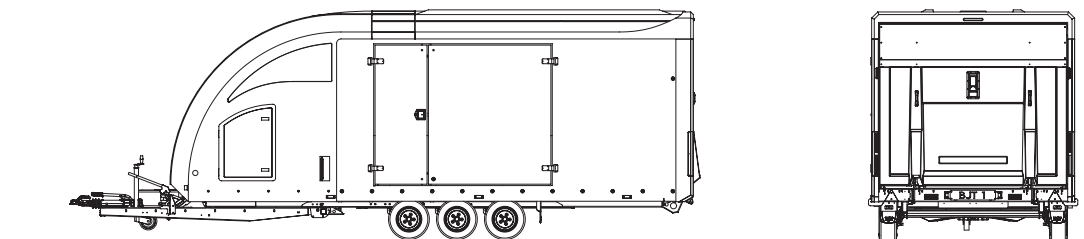
OPTIONAL EQUIPMENT.



OPTIONS – EXTERIOR and INTERIOR				
MODEL	RT 4	RT 5	RACE TRANSPORTER 6	
Models	All models	All models	Standard models	Hi-Line models
EXTERIOR				
Front access hatches	●	●	●	●
Side doors on both sides	● (excluding 374-0001)	●	●	●
Complete side panels	● (374-0001 only)	—	—	—
Full LED trailer lighting	○	●	●	●
LED reverse lights – side mounted	○	○	○	●
Rear door – anti slip ply deck	●	—	—	—
Rear door – aluminium and steel construction with body moulding	—	●	●	●
Cast steel coupling head with integral high security lock	○	●	●	●
Daylight roof	○	●	●	●
Alloy wheels – lightweight 4 x 12" (Style B1) + safety locking wheel bolts – Not available on 3,500 kg gross capacity trailers	○	○	—	—
Alloy wheels – lightweight 6 x 10" (Style B1) + safety locking wheel bolts	—	—	○	●
Alloy wheels – lightweight 6 x 13" (Style T1) + safety locking wheel bolts	—	—	○	—
Wheels-Safety kit – torque wrench + digital tyre pressure gauge	○	○	○	○
Tyre pressure monitoring system – TPMS. By TyrePal. In car monitor, external sensors.	○	○	○	○
Side windows in dark tinted acrylic	○	○	○	●
Datatag – Security identification system	○	○	○	○
Tracker – Anti theft device. By SureTrack. Full time monitoring 24/7. Location of asset + recovery service. Thatcham approved. Sold secure approved. Yearly monitoring fee £90. Year 1 incl.	○	○	○	○
Vinyl graphics – Chequered flag (silver or black), Union Jack or Swoosh Design	○	○	○	○
Black Body, Black gel coat GRP and black side panels	○	○	○	○
INTERIOR				
Interior LED lighting pack – 8 flood + 2 high intensity spot lamps	○	○	○	●
Interior LED light strips x 3	○	●	●	●
Hand wash station with warm water store	○	○	○	●
Paper towel dispenser	○	○	○	●

RACE TRANSPORTER 4, 5 & 6

OPTIONAL EQUIPMENT.



OPTIONS – OPERATION and STORAGE				
MODEL	RT 4	RT 5	RACE TRANSPORTER 6	
Models	All models	All models	Standard models	Hi-Line models
BODY				
Extra Height - Adds 220mm to the internal height of the trailer.	—	—	○	○
OPERATION				
Adjustable wheel chock – bolt in	○	—	—	—
Adjustable wheel chock - quick release, 55mm high, suitable for cars with low splitters.	—	●	●	●
Adjustable wheel chock – quick release (Red), commercial car transporter type.	—	○	○	●
Tie-down straps x 4 – 4,000 DaN heavy duty	○	●	●	●
Electric Winch with Remote and Battery	○	—	—	—
Electric winch – 12v. Remote control by pendant switch.	—	●	●	●
12v winch battery, charges from towing vehicle.	—	●	●	●
Winch radio control system	○	○	○	●
Assistor loading ramps (pair)	○	○	○	○
Double assistor ramps – ultra low hinged – pair	○	○	○	○
Move control 4 wheel drive system + radio remote control	—	—	○	○
STORAGE				
Front Store Station, Single - 3 x Shelves, 2 x 20ltr Jerry can Storage	○	—	—	—
Front Store Station, Double - 6 x Shelves, 4 x 20ltr Jerry can Storage	○	—	—	—
Aluminium storage tray – front, including deck board hinged lids	—	—	○	●
Aluminium storage tray – central, below bed	○	○	●	●
Hinged deck board lid – for Aluminium storage tray – central	○	○	○	—
Hinged aluminium lid + gas strut assistance – for Aluminium storage tray – central	○	○	○	●
High level tyre rack + work bench	—	○	○	●
High level tyre rack	○	○	○	—
Store station for jerry can + parts storage	—	○	○	●
Aluminium side storage racks – pair, one each side	○	○	○	●
Electric Hydraulics and Front Storage	—	—	○	○

● Standard. ○ Optional at extra cost.

QUALITY

Brian James Trailers are manufacturers of class leading trailers, since 1979. When you buy a Brian James Trailer you can be absolutely certain that it is designed and constructed to the highest possible standards. Our Engineers combine top-quality craftsmanship with the best materials and first-class presentation. Light but strong, our trailers are crafted to enhance safety, efficiency and durability.

5 Year Chassis Warranty

This Brian James Trailer is provided to you with a non-transferable manufacturers warranty covering the integrity of the chassis for a period of 5 years from the date of first registration.

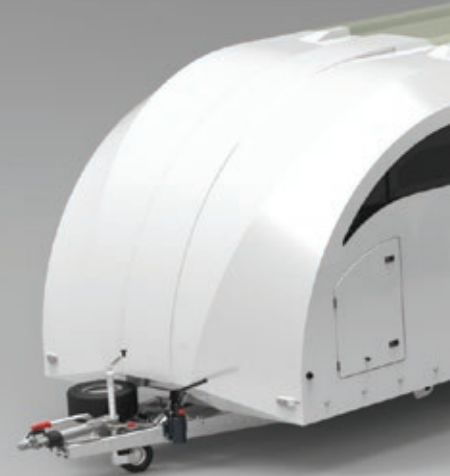
We warrant that under normal use, outside of accident damage or misuse (meaning driven across unsuitable territory or being overloaded) the chassis will not fatigue or fail to be able to perform its intended duties safely.

Any repair or rectification as a result of a claim under this warranty will be at Brian James Trailers cost and be carried out either at a Brian James Trailers main dealer, or at the factory HQ in Daventry, UK, at the discretion of Brian James Trailers Ltd. A repair may involve removal of the original galvanised surface finish, for which we will not liable to reinstate to its original state.

Brian James Trailers will not be liable for any consequential loss in connection with a claim on this warranty, including recovery fees or transport to or from the place of final repair.



RACE TRANSPORTER
Crossing continents





RACE TRANSPORTER

NOTES

Specifications are subject to change without notice.
Illustrations and photography may depict optional equipment.

www.brianjames.co.uk

© BRIAN JAMES TRAILERS LIMITED.
Printed in the UK.

Edition RTRANS2017_Q4_1

Brian James Trailers Limited.
Sopwith Way, Drayton Fields Industrial Estate
Daventry, Northampton, NN11 8PB

T + 44 (0)1327 308 833

Brian James Trailers are available by contacting our sales team as well as through an extensive network of official dealers throughout the country.

For more information please call or visit our website.

www.brianjames.co.uk

Dealer information.